

Hanter Pneumatic Tube Systems

CASHTRONIC<sup>®</sup>02 (Point-to-point)

One-way and Two-way

63mm, 90mm, 110, 160mm

## About Hanter Cashtonic®O2 (point-to-point)

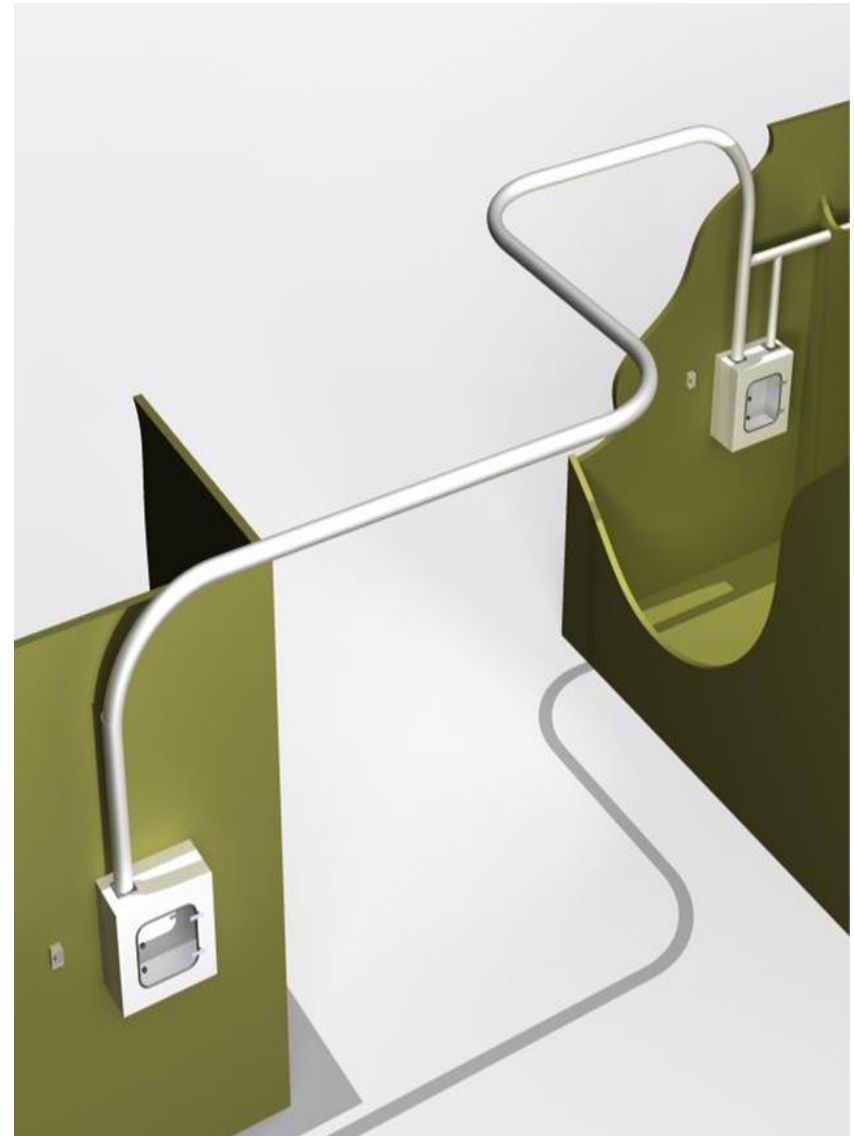
Companies that use O2 (point-to-point) systems are often in need of inexpensive and reliable transport because of safety reasons or because their activity is divided into two working zones such as office - freight terminal, office - production, laboratory - sample collection, storage - sales and so on.

For example, a typical O2 safety solution is a system for 24h stores or gasoline stations, where cashiers can continuously deposit all cash to a safe.

A Cashtonic®O2 pneumatic tube system can be One-way and Two-way. Tube diameters: 63mm, 90mm, 110mm, 160mm or 200mm. In some specific cases tube diameter can be even bigger.

Here are examples of transported objects:

- Documents
- Spare parts
- Samples
- Medicines
- Cash and valuables
- Shoeboxes
- etc.



Components: Cashtronic®O2 One-way and Two-way

### Main Control Unit, MCU

The MCU is responsible for controlling the O2 pneumatic tube system. The O2 MCU is relay controlled and uses optical tube switches or timer settings to control send times.

### Stations

Choice of stations depends on user's system functionality requirements. Hanter IT offers wide range standard stations such as cabinets, safety cabinets, slide stations and etc. If needed, beside standard stations we design and produce customer specific solutions.

### Blower

Carriers in a systems are driven by air. Blowers can be 1-phase or 3-phase, depending on system diameter and its length, weight of transported goods. 3-phase blower can be also used in combination with air reversing valve.

### Tubes

Hanter PTS tubes and bends are of highest quality for use in Pneumatic Tube Systems only. Using specified PTS tubes is important to provide long and reliable system operation. Available colors are light gray, white and transparent

### Panels

Depending on application one or two panels are required. The panels are used to start a send.

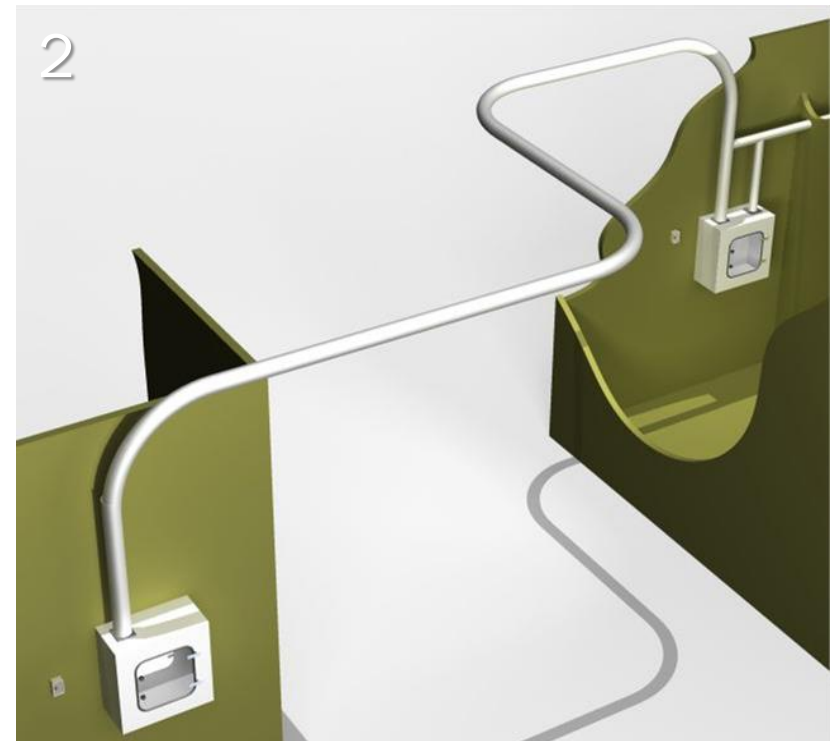
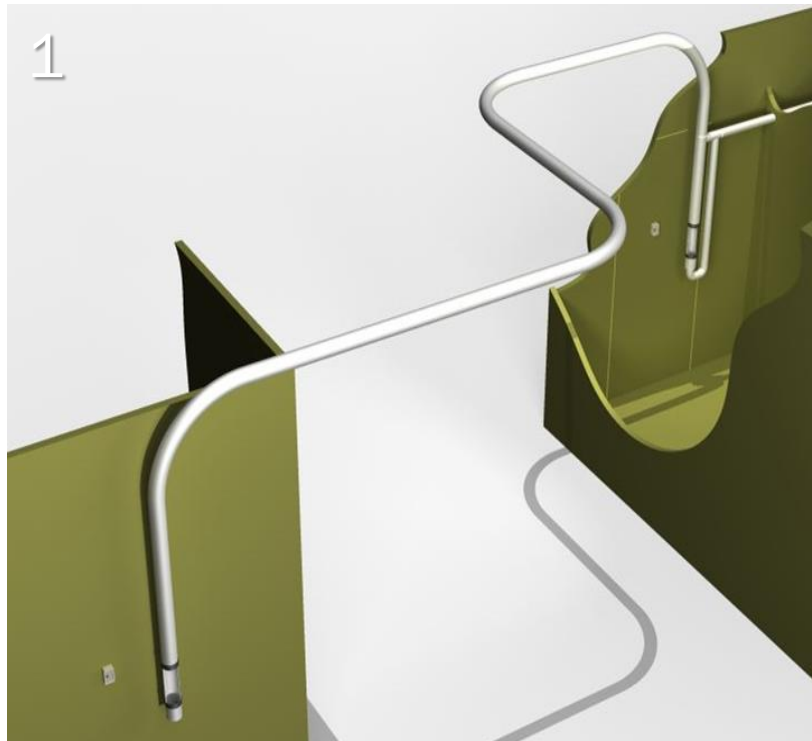


## Two-way applications

### Main operational differences

1. Slide stations are not expensive and very good if soft arrival is a must. But, slide stations do not allow appropriate storage of carriers.

2. Using steel cabinet stations allows both automatic storage and restricted access to the received carriers.



## One-way applications

### Main operational differences:

1. Latch station and a basket allows best receiving capacity for the money regarding all dimensions – 63mm, 90mm, 110mm and 160mm.



1



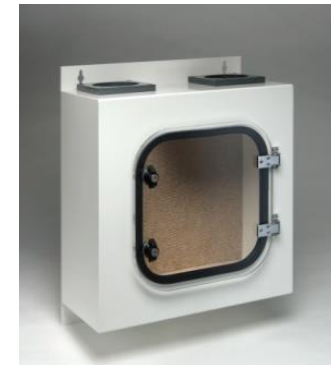
2. Safety cabinet provides best secure access control. The best capacity is provided if security cabinet is used in 63mm systems with bags as carriers. 90mm and 110mm carriers require bigger cabinets.



2



3. Steel cabinet provides basic security access control and decent capacity even when it is used in 90mm and 110mm systems.



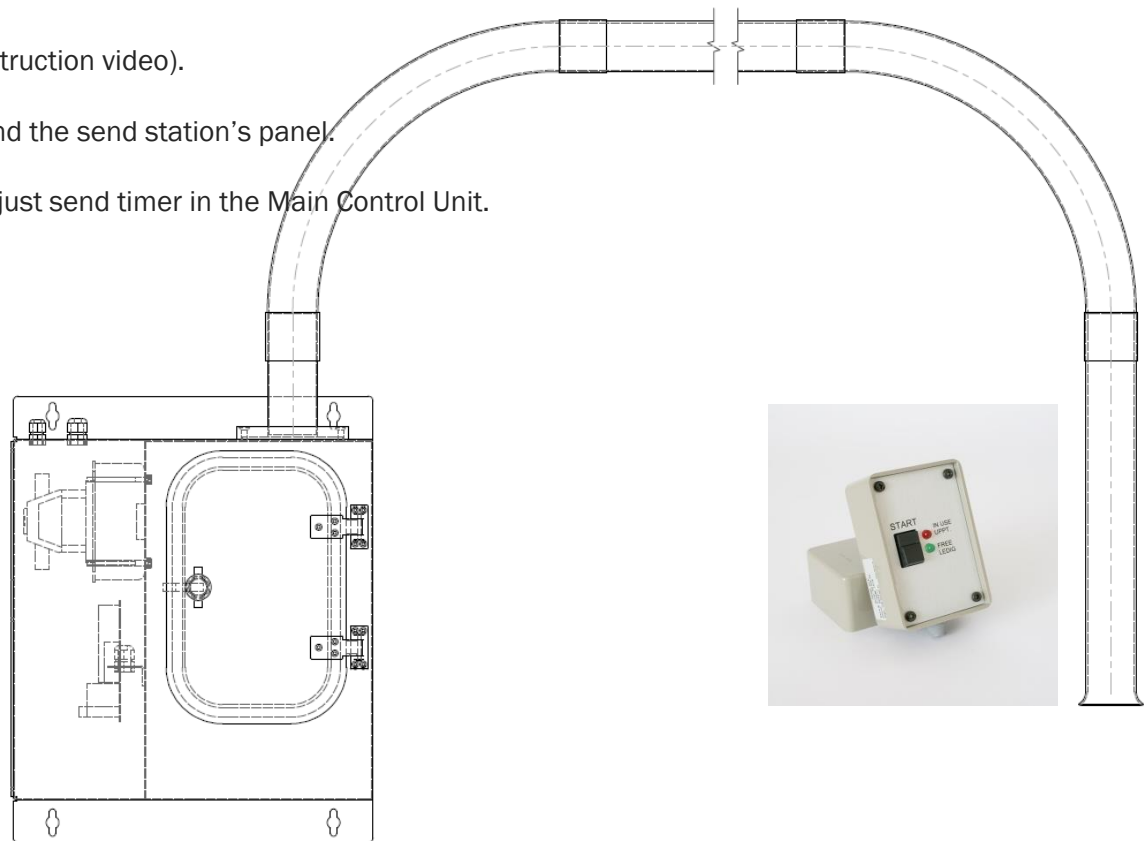
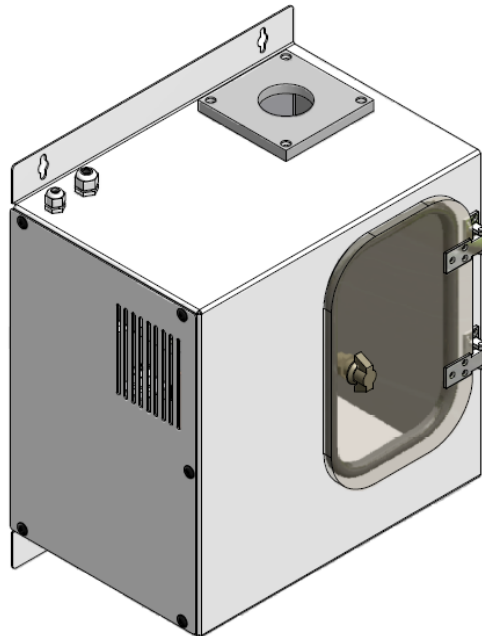
3

## The most easy pneumatic tube system to install?!

As addition to Hanter regular one-way O2 systems we have designed a one-way point-to-point system, that is easy to install by any technician in few non-complicated steps:

- The receiving station, blower and Main Control Unit are combined in one unit. Set it where is the receiving point. The steel cabinet's door is also equipped with key lock to provide basic access restriction.
- Install the tube line (use our tube connections instruction video).
- Install the cable between the Main Control Unit and the send station's panel.
- Connect the receiving unit to power outlet and adjust send timer in the Main Control Unit.

The system is available in 63mm, 90mm, 110mm.



## Hanter IT PTS Carriers

Hanter Ingenjörsteknik AB is one of the world leading PTS carrier producers. A number of our carriers are worldwide bestsellers.

Carriers are a vital part. Choosing the wrong carrier for your task will lead to damaged goods and system malfunction in any type of system.

Therefore beside ergonomic Swivel Lid carriers we have heavy duty leakage preventive Screw Cap carriers for transportation of heavy and fragile loads.

Also, to protect fragile goods we provide carrier inserts and goods packaging and explain how to use it.

